

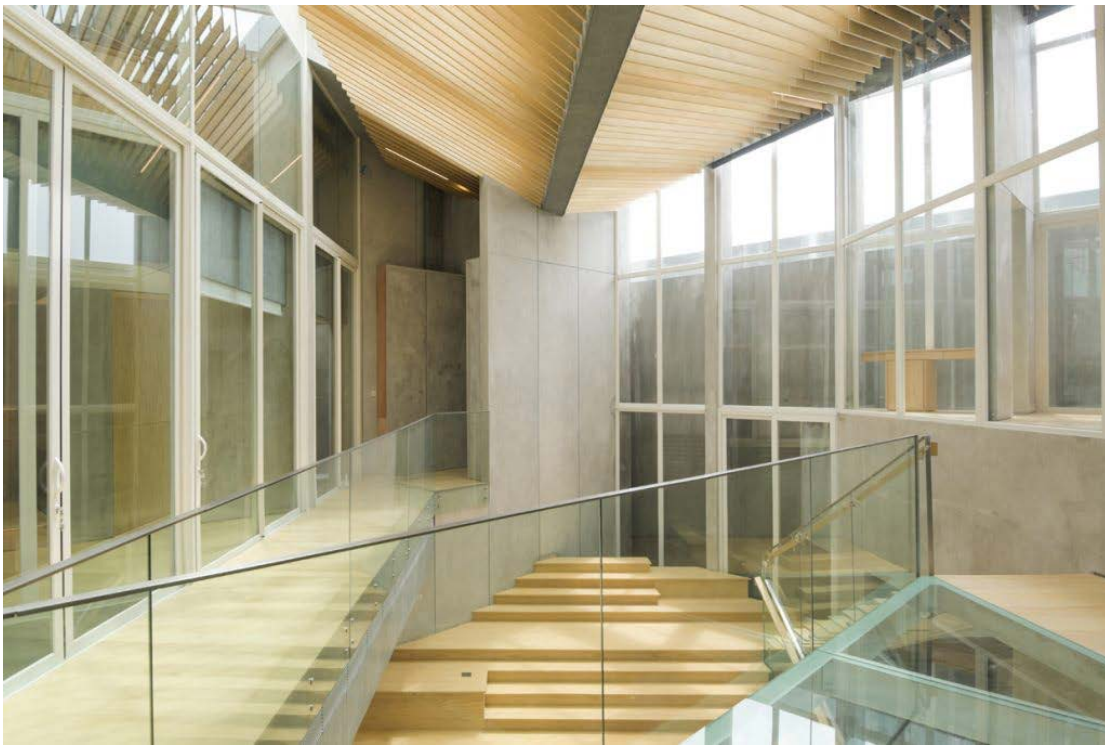
Press Release

21 July 2025

Cleantech Building Materials plc**Showcasing Accoya® Wood - RC House Meruya, Indonesia**

Cleantech Building Materials plc (“CBM” or the “Company”) is proud to showcase RC House Meruya, in Indonesia, demonstrating the versatility of Accoya® Wood to create sustainable, visually stunning, architectural features in a variety of applications.

RC House Meruya is the work of Antony Liu, who in collaboration with the Company’s Indonesian distributor, WOODLAM Indonesia, utilised Accoya® Wood for pool decking, shading louvers, flooring and stair treads, amongst other features. A natural coating was applied to the Accoya® Wood to ensure the wood texture stood out.



Accoya® Wood fitted perfectly with Liu’s philosophy of ensuring RC House was a dialogue of design and tranquility, focused on the wellbeing of people within a space, and showing how design and materials can elevate people’s life.



The Accoya® Wood chosen for this project is a high-performance solid wood that is used by architects and manufacturers to replace endangered tropical hardwoods and energy-intensive materials, like steel, aluminium and specialty plastics. Accoya® Wood is both sustainable and non-toxic to the environment. It is produced through the enhancement of sustainably grown Radiata Pine into the ideal material for windows, doors, shutters, decking, cladding and general construction.



RC House Meruya embodies the values that architects, manufacturers and builders have come to associate with Accoya® Wood: innovation, longevity, and a commitment to environmental leadership.

Its aesthetic appeal, performance benefits, and sustainability make Accoya® Wood the choice for designers seeking both form and function.

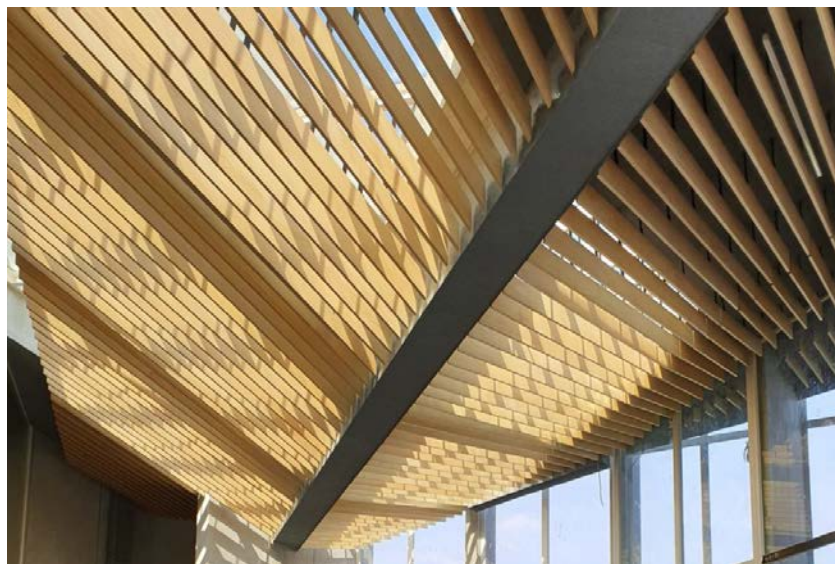


The Accoya® Wood Advantage

Accoya® Wood is a revolutionary solid wood product created through a patented acetylation process that transforms fast-growing FSC®-certified Radiata Pine into a material with strength and durability to rival—and often exceed—traditional tropical hardwoods and carbon-intensive materials like steel, aluminium, and PVC.

Used in applications ranging from windows and doors to cladding, decking, and high-end architectural design, Accoya® Wood offers:

- **Dimensional stability and durability** backed by a 50-year warranty;
- **Low maintenance and long coating life**, reducing total lifecycle cost; and
- **Superior performance in tropical climates**, including high resistance to termites and splintering, and a cooler surface underfoot.



Accoya® Wood is the only structural building material in the world to have received **Cradle to Cradle™ Gold** certification. Its carbon-sequestering properties are profound: for every cubic metre produced, 944kg of CO₂ is captured, while only 88kg is emitted.

Through its wholly owned subsidiary, Diamond Wood China Limited, CBM is currently constructing the first Accoya® Wood factory in China—laying the foundation for a major shift towards carbon-negative construction in the world’s largest building materials market. At full Phase 2 capacity, CBM’s China factory will produce 320,000m³ of Accoya® Wood annually, sequestering carbon equivalent to the emissions from over 11 million litres of gasoline every year. Phase 3 is planned to increase capacity further to 480,000m³ of Accoya® Wood annually.

Diamond Wood, CBM’s operating business in Asia, has maintained **FSC® certification** since 2008—ensuring full traceability and responsible sourcing from sustainably managed forests. The new China manufacturing facility, now under construction, will incorporate advanced environmental standards and closed-loop systems that repurpose key production outputs—paving the way for a fully circular and low-impact industrial model.

With more than 6,000 projects across Asia already incorporating Accoya® Wood, the refreshed brand signals the Company’s intent to lead a global transition toward sustainable, performance-driven construction materials.

Further Enquiries:

Cleantech Building Materials plc
 Adrian Wyn-Griffiths

info@cbm-plc.com
 +44 20 3934 6630

IFC Advisory Limited
 (Financial PR)
 Tim Metcalfe / Zach Cohen

+44 20 3934 6630

Notes to Editors:



CBM, through its subsidiary Diamond Wood China Limited, owns exclusive manufacturing rights to Accoya® Wood in China and is in the process of establishing a new large scale Accoya® Wood factory in China to meet the huge demand in the region.

For more information please see: <http://www.cbm-plc.com> and <https://www.diamondwoodchina.com>



Accoya® Wood is produced using a proprietary patented acetylation technology that effectively converts sustainably grown softwoods and non-durable hardwoods into what is best described as a 'high technology wood'. Distinguished by its durability, dimensional stability and, perhaps most importantly of all, its reliability (in terms of consistency of both supply and quality), Accoya® Wood is particularly suited to exterior applications where performance and appearance are valued. Moreover, the Accoya® Wood production process does not compromise the wood's strength or machinability. The combination of dimensional stability, durability and retained strength means that Accoya® Wood offers a wealth of new opportunities to architects, designers and specifiers. These benefits result in lower maintenance and total cost of ownership while using a higher sustainable and environmental responsible building material.



As an example of Accoya® Wood's use, Google's London headquarters, is the largest wooden façade in the world (23,300 m² total area). Accoya® wood was selected for its negative carbon footprint, resistance to exterior elements, and its beautiful natural aesthetic.



For more information please see: <https://www.accoya.com>